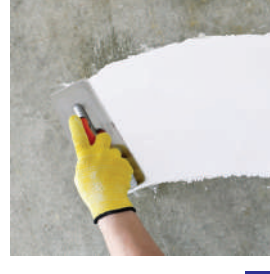
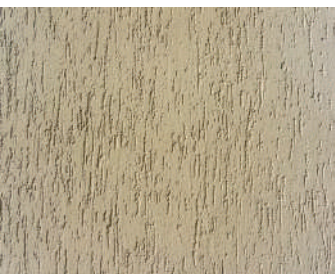




V-BOND[®]

AN ISO 9001:2015 CERTIFIED



Why V-BOND[®] ?



End to End Manufacturer With Own Raw Materials



Ready to Mix and Use



Eco-Friendly Products



Quality Products at Cost Effective Price



Personalized Bond for
Your Dream Construction

Indian Green Building Council
MEMBER



AAC BLOCKS

V-Bond AAC BLOCKS are manufactured using state of the art Germany Technology. Excellent in Thermal Insulation, Economically Viable, Light in Weight, 100% Termite, Mold & Fire resistant.

Advantages:

- ❖ Earthquake resistance & High compressive strength
- ❖ High resistance to water penetration & Pest resistance
- ❖ Fire Resistant
- ❖ Excellent thermal insulation & Light weight
- ❖ Faster construction
- ❖ Light Weight & Environment friendly
- ❖ Perfect size and shape

Available Sizes: 4", 6", 8", 9"



BLOCK JOINT MORTAR



V-Bond Block Jointing Mortar is a superior water-resistant cement-based mortar designed specifically for joining blocks. This mortar is specially designed and manufactured to provide superior adhesive strength, higher longevity and a strong bond between the blocks under strict quality controls. It also ensures higher bond at any thickness.

Advantages:

- ❖ No curing required
- ❖ Very high adhesion strength
- ❖ Pre mixed and ready to use
- ❖ Flexible, shock & impact resistant
- ❖ High compressive & tensile strength
- ❖ Seepage water percolation through joints is negligible
- ❖ Durable, Fast & Economical

Packing: 40 kg bag

Coverage	
Block Size	Num of Blocks
4"	85 - 95
6"	55 - 65
8"	45 - 55
9"	35 - 45

READY PLASTER

V-Bond Ready Plaster is a blend of Portland cement, finely graded sand and water-soluble high-quality polymer additives in the Specified proportion. This mixture is ready to use by mixing with water at the site and can be applied on bricks, blocks, and concrete surfaces.

Advantages:

- ❖ An alternative for traditional plastering
- ❖ Consistent quality Uniform and smooth finish
- ❖ Reduced water absorption & enhanced durability
- ❖ Easy to apply & faster completion of work
- ❖ No Wastage & no rebounding losses
- ❖ Reduce Construction Costing
- ❖ Very minimal curing required

Packing: 40 kg bag

Coverage	
Thickness	Sq.ft
6 mm	30-36
8 mm	24-28
10 mm	18-20
12 mm	16-18



DUBARA PLASTER

Dubara Plaster is a specially formulated blend of Portland cement, fine graded sand, and water-soluble, high-quality polymer additives, precisely proportioned to create a versatile and ready-to-use mixture. With its simple preparation process, it can be easily mixed with water on-site, making it ideal for applying as a Second Coat on bricks, blocks, and concrete surfaces.

Advantages

- ❖ An alternative for traditional plastering
- ❖ Consistent quality Uniform and smooth finish
- ❖ Reduced water absorption & enhanced durability
- ❖ Easy to apply & faster completion of work
- ❖ No Wastage & no rebounding losses
- ❖ Reduce Construction Costing
- ❖ Very minimal curing required

Packing: 40 Kg Bag



Coverage
140-160 Sq.ft/ 40 Kg Bag

WALL CARE XPERT (COARSE)



V-Bond Coarse putty is a blend of White Cement, Polymers, and Special Grade minerals. It is suitable for indoor and outdoor surfaces. It covers all the undulations of the wall and provides white sand, leveled surface. It also renders an additional durable water resistant base that prevents flaking.

Advantages

- ❖ White & levelled surface & Good Breathability
- ❖ Covers all Undulations
- ❖ Water Resistant & Superior Bonding Higher
- ❖ Max application thickness in Single Coat - 15 mm
- ❖ Does not allow Fine Finish to flake
- ❖ Ideal for interior & exterior walls

Packing: 40 Kg Bag

Coverage
140sft/40kg bag – 1 Coat

WALL CARE XPERT (FINE)

V-Bond Premium Wall Xpert Putty is a blend of White Cement, high quality Polymers, and Special Grade minerals. It is suitable for indoor and outdoor applications.

Advantages:

- ❖ White & levelled surface
- ❖ Water-Resistant & Superior Bonding
- ❖ Higher Coverage
- ❖ Good Breathability
- ❖ Does not allow Fine Finish to flake
- ❖ Ideal for interior & exterior walls

Packing: 40 kg bag

Coverage
400-480 sft/40Kg bag – 2 Coats



WALL TEXTURE

V-Bond Wall Textures, a unique concept in wall coverings, that combines textures and colors to create an exciting alternative to Wall paper, Tiles and other coatings. Available in two variants- Natural Grit finish (Two Component: 25+5 Kg) and Designer Textures (25 Kg)

Advantages:

- ❖ Crack Resistant
- ❖ High Adhesion Strength and Durable
- ❖ Excellent against abrasion and scratches
- ❖ All weather proof & water resistant
- ❖ Suits for Interior & Exterior Applications
- ❖ Aesthetic look for the Elevations
- ❖ Multicolor in single coat

Packing: Nat-Fin: 25 Kg Bag dry mix powder + 5 Kg Acrylic Binder

De-Tex: 25 Kg Bag Wet mix

Coverage		
Nat-Fin	De-Tex	Sft/Bag
140- 150 Sq.Ft/ Bag	Type	Sq.ft/Bag
	Jumbo	50-60
	Regular	70-80
	Fine	80-90



(INTERIOR & EXTERIOR)

WATER PROOF PRIMER

V-Bond Primer is a Premium quality, water-based dispersion containing cross linked polymers and selected surface activation agents, maximizes bond strength and penetrates deep into the substrate.

INTERIOR GRADE Advantages: **EXTERIOR GRADE Advantages:**

- ❖ Does not require curing with water
- ❖ Excellent opacity and whiteness
- ❖ Improves appearance of top coat
- ❖ Prevents peeling off from Substrate
- ❖ Does not require curing
- ❖ Excellent opacity and whiteness
- ❖ Prevents peeling off from Substrate
- ❖ Withstands exterior weather conditions
- ❖ Superior Whiteness

Coverage
100-120 Sq.ft/Ltr

Coverage	
Plain Walls	80-100 Sq.ft/Ltr
Textured Walls	50-60 Sq.ft/Ltr

Packing: 1, 4 Ltrs cans, 10 Ltrs & 20 Ltrs pails



SCREED-WP TERRACE & FLOORING

(136)
(148)

V-BOND Screed-WP is an environment friendly, nontoxic, cementitious waterproof floor screed that is specially formulated with specialty polymers, additives and graded aggregates. V-BOND Screed-WP is a single component, easy to install, and cost effective waterproofing system that provides integral waterproofing by forming a hydrophobic layer within the screed to prevent water penetration into the concrete floor.

Advantages

- ❖ High strength
- ❖ Water retaining & self-curing
- ❖ Non-Shrink
- ❖ Easy to use
- ❖ Industrial buildings, Residential and commercial buildings
- ❖ Interior & Exterior screeding
- ❖ Screed repairing

Packing: 40 kg bag. Shelf life is 12 months if the product is kept in a dry place

Coverage	
136	148
60Kg Aggregate	64Kg Aggregate
1810 Kg/Cum	1810 Kg/Cum



V-FIX GOLD

(1307)

VFIX-GOLD Premium Tile Adhesive (Type-1) is a Single component thin bed tile adhesive which is ready to use Cement based Polymer modified dry mix mortar for fixing various types of tiles.

Advantages:

- ❖ Self-curing & easy to use
- ❖ Flexible* & Medium Bond strength
- ❖ Can be used for interior application on floor and walls*
- ❖ Can be used on masonry, concrete & Cement plaster
- ❖ Ideal for ceramic tiles

Packing: 20 kg & 50 kg bag (On demand)

Color: White /Grey

Coverage

50-55 Sq.ft / with 6mm x 6mm Notch Teowel

Note: Coverage vary with Size and type of Tile



(2315)

V-FIX GOLD PLUS



VFIX-GOLD Plus Extra Premium Tile Adhesive (Type-2) is a Single component thin bed tile adhesive which is ready to use Cement based Polymer modified dry mix mortar for fixing various types of tiles & Stones.

Advantages:

- ❖ Self-curing easy to use thin bed tile adhesive
- ❖ Flexible* & High Bond strength
- ❖ Can be used for wet areas
- ❖ Can be used for interior & Exterior applications
- ❖ Can be used on floors & walls
- ❖ Can be used on masonry, concrete & Cement plaster

Packing: 20 kg & 50 kg bag (On demand)

Color: White /Grey

Coverage

50-55 Sq.ft / with 6mm x 6mm Notch Teowel

Note: Coverage vary with Size and type of Tile

V-FIX PLATINUM

I - 3325 - PLUS

II - 3335 - MAXI

III - 3254 - SUPER

VFIX-Platinum Ultra Premium Tile Adhesive (Type-3) is a Single component thin bed tile adhesive which is a ready to use Cement based Polymer modified dry mix mortar for fixing various types of tiles & stones for floor, wall and counter tops.

Advantages:

- ❖ Self curing adhesive & Easy to use
- ❖ Ideal for large format tiles & stones
- ❖ Suitable for Natural, Italian, Marbles & Granites
- ❖ Flexible, Shock & Impact resistant
- ❖ Fast & Economical
- ❖ High bond strength & Water resistant
- ❖ Can be used for Wash, Wet areas like Kitchens, counters & swimming pools.

Packing: 20 kg & 50 kg bag (On demand)

Color: White /Grey

Coverage

50-55 Sq.ft / with 6mm x 6mm Notch Teowel

Note: Coverage vary with Size and type of Tile



VEPOXY-SP GOLD - 2K



Mix Ratio

PART A	PART B
90 GMS	960 GMS
1	10.6

COVERAGE	
TILE SIZE	COVERAGE FOR 2MM JOINT
600*600* 8mm	120
300*300* 6mm	80
300*200* 6mm	65
200*150* 5mm	55
150*150* 4mm	61
100*100* 3mm	55

VEPOXY-SP GOLD-2K is a two component speciality formulated chemical resistant grout for heavy duty applications. It is recommended for areas where hygiene is of utmost importance. It is Suitable for ceramic, vitrified, marble, granite stone & Glass Mosaic Tiles

Advantages:

- ❖ For tile joints having flesh joint from 2-6 mm
- ❖ Anti Fungal & Anti Bacterial
- ❖ Stain free & Easy to clean
- ❖ Non-Shrinkage, Non-Cracking and Non-Powdering

Packing: 1.05Kg, 5.25Kg & 10.5Kg

Colors: Available 22 colours from the "VBOND Coloured Grouts" range

Our Specialty: We do customized special colors on demand.

Note: Coverage shown are approximate and are given for estimate purpose only.

Actual Job Site - Coverage's may vary.

(1800 Series)

VEPOXY-SP GOLD - 3K

COVERAGE	
TILE SIZE	COVERAGE FOR 2MM JOINT
600*600* 8mm	120
300*300* 6mm	80
300*200* 6mm	65
200*150* 5mm	55
150*150* 4mm	61
100*100* 3mm	55

VEPOXY-SP GOLD Special Purpose Epoxy Tile Grout is a 3 component grout comprising of resin, hardener and filler. VEPOXY-SP GOLD is very suitable for ceramic, vitrified, marble, granite stone & Glass Mosaic Tiles.

Advantages:

- ❖ For tile joints having flesh joint from 2-6 mm
- ❖ Smooth finish
- ❖ Stain free & Easy to clean
- ❖ Chemical & Acid Resistant

Packing: 1.05Kg, 5.25Kg & 10.5Kg

Colors: Available in a range of fast moving 3 colors namely White, Black & Ivory.

Our Specialty: We do customized special colors on demand.

Note: Coverage shown are approximate and are given for estimate purpose only.

Actual Job Site - Coverage's may vary.



Mix Ratio

HARDNER	RESIN	FILLER POWDER
90 GMS	210 GMS	750 GMS
1	2.3	8.3

UNSANDED GROUT

(1600 Series)



V-Bond PREMIUM UNSANDED Cementitious Tile Grout is a well prepared mix of Ordinary Portland Cement, Graded Minerals, high end Polymers & Specialty Pigments. It is suitable for tile joints that are less than or equal to 6 mm. It is suitable for internal and external applications for wall and floor tiles.

Advantages:

- ❖ For tile joints having flesh joint from 0-6 mm
- ❖ Smooth finish & Non-Shrink
- ❖ Clings well to the vertical surfaces
- ❖ Water resistant & Crack free cementitious Grout

Packing: 1 kg x 10 (Carton Box), 5Kg & 10 kg bag (On demand)

Coverage: Please refer the TDS for coverage and application.

Note: For above 6mm Tile Joints Sanded Grouts are available and supplied on demand.

For Commercial areas Vbond Grout admix is recommended

GROUT ADMIX-PREMIUM

V-BOND - GROUT ADMIX PREMIUM is used in place of water to improve the strength of cementitious tile grouts. It is ideal for interior and exterior tile grout applications and enhances flexibility, durability, flexural strength and workability. It also protects from efflorescence & flague.

Advantages:

- ❖ Easy to clean
- ❖ Inhibits - Stain causing bacteria, cracking & powdering
- ❖ Provides more dense and stronger grout joint
- ❖ Color Fastener
- ❖ Reduce staining and Water Absorption
- ❖ Designed for Interior and Exterior use

Packing: 400 ml Plastic can (400mlx12 Nos) & other bulk pack will be provided on demand.

Dosage: 400 ml for 1Kg USG



WATERPROOF IW+



WATERPROOF IW+ is specially formulated integral liquid waterproofing compound composed of surface-active plasticizing agents, polymers & additives. It is used as an additive for cement concrete, mortar & plasters.

Advantages:

- ❖ Corrosion-resistant
- ❖ Compatible with concrete/mortar mixes.
- ❖ Reduces the permeability of water into concrete.
- ❖ Setting time and strength of the concrete remains within the specified limits.
- ❖ Reduces shrinkage, crack development in plaster & concrete.
- ❖ Improves the workability of freshly mixed cement concrete.

Packing: 400ml/ 1Ltr/ 5Ltr/ 20Ltr

Dosage: 100ml / 50Kg Cement Bag

CON REPAIR SBR-LATEX

CON REPAIR SBR LATEX is a modified styrene butadiene Rubber emulsion specially designed for use as a bonding aid and gauging liquid for cementitious systems.

Advantages:

- ❖ Simple to use - Single component, gauged as required.
- ❖ Provides excellent bond to concrete, plaster, masonry, stone work
- ❖ Provides weather resistant mortar with improved durability
- ❖ Provides waterproof screeds, plasters & Mortars
- ❖ Improved tensile and flexural properties
- ❖ Economical to use

Packing: 1Ltr/ 5Ltr/ 20Ltr

Coverage

4-5Sq.mr/Ltr



AQUABOND-2K

AQUABOND 2K is an acrylic cementitious, polymer modified elastomeric, waterproofing & protective coating composed of best quality Portland cement, properly graded aggregates, additives & acrylic emulsion polymer as a binder. It is a two component cementitious water proofing system which acts as a good water resistant barrier.

Advantages:

- ❖ Protects concrete and prevent water leakage
- ❖ Gives excellent waterproofing & UV resistance
- ❖ Elastomeric flexible coating
- ❖ Low water permeability
- ❖ Excellent adhesion to concrete and masonry surfaces
- ❖ Eco-friendly - Non-toxic with low VOC content

Packing: 20 kg Kit (15 Kg dry mix Mortar + 5 Kg Liquid)

Mix Ratio

Coverage	Liquid	Powder
10-18Sq.m ² /Kg	1	3



GROUT-700 NS



GROUT-700NS is supplied as a single component ready to use dry mix mortar. The addition of a controlled amount of clean water produces a free flowing, non-shrink grout for gap thicknesses up to 100mm.

Advantages:

- ❖ Ready to use & easy to mix
- ❖ Consistency can be adjusted
- ❖ Free flowing nature
- ❖ Early strength setting & High durability
- ❖ Initial expansion by gas generation
- ❖ Impact & vibration resistant
- ❖ Non shrink & non corrosive

Packing: 25 kg Bag

Coverage: Please refer the TDS for coverage and application.

FIXTOP-666

FIX TOP 666 is a pre-blended cementitious floor hardener for fresh concrete, containing well-graded, non-metallic aggregates. It is used as a concrete floor hardener for residential, commercial & industrial floors because it forms a very high abrasion resistance to the fresh concrete floor as a monolithic surface.

Advantages:

- ❖ It provides a hard-wearing surface.
- ❖ It is chloride free and hence does not result in corrosion of metals
- ❖ It increases abrasion resistance.
- ❖ It provides a non-slip surface.
- ❖ Non Corrosive, Less water absorption, has increased resistance to Oil & Grease.
- ❖ Easy, simple and economical in the application.

Packing: 25 kg Bag

Coverage	
Medium Traffic	3-5 Kg/m ²
Heavy Traffic	5-7 Kg/m ²



COOL BOND

CoolBond is scientifically proven to stop over 25% of heat transfer through your roof structure to your work or living spaces below. This translates to savings on cooling costs, providing a payback period on initial investment.

Area of Application:

- ❖ **Residential Buildings:** Ideal for homes seeking efficient cooling solutions to enhance comfort and reduce energy costs.
- ❖ **Commercial Buildings:** Provides sustainable cooling benefits for offices, retail spaces, and other commercial establishments.
- ❖ **Industrial Facilities:** Offers corrosion resistance and thermal insulation for industrial structures located in coastal or high-heat environments.

Advantages:

- ❖ Heat Transfer Reduction
- ❖ Cost Saving
- ❖ UV protection
- ❖ Corrosion resistance

Packing: 20 ltrs pails

Coverage
20-30 Sq.mr/Kg



NEXT GEN PRODUCTS



PU FOAM ADHESIVE



SEALANT



DAMP BOND



CRACK BOND

	01 BRIGHT WHITE		12 SMOKE GREY
	02 SILK		13 SILVER SHADOW
	03 SAUTERNE		14 SLATE GREY
	04 ALMOND		15 PLATINUM
	05 SPECTRA PINK		16 RAVEN
	06 DUSTY ROSE		17 MIDNIGHT BLACK
	07 MAYAN RED		18 SKY BLUE
	08 BURGUNDY		19 ALPINE BLUE
	09 MOCHA		20 MARBLE BEIGE
	10 SAND STONE		21 HEMP
	11 SABLE		22 IVY

*** FOR EPOXY GROUTS - The above shades are available in Metallic too.**

This is a standard shade card. There may be shade variations.

Actual shade and texture will depend on job site conditions. Other shades will be provided based on customer requirement & quantity of order.



VALUE PACK INDIA PRIVATE LIMITED

(AN ISO 9001:2015 CERTIFIED COMPANY)

Regd Office: Unit G4, Ground Floor, Plot No. 7-6-43/1, SV Landmark, Bollaram Road, Medchal, Hyderabad, Telangana-500090.

Corp Office: Plot No. 217/A, V-BOND Building, Near Metro Station, Kalvari Temple Road, Miyapur, Hyderabad, Telangana-500049

Factory: Sy. No. 210 & 211, Near A.P. Met, IDA Bollaram, Sangareddy, Telangana-502 325. Website: www.vbond.in

CIN NO: U74999TG2014PTC095270

Customer Care

Phone : +91 96664 96664,
e mail: info@valuebond.in

